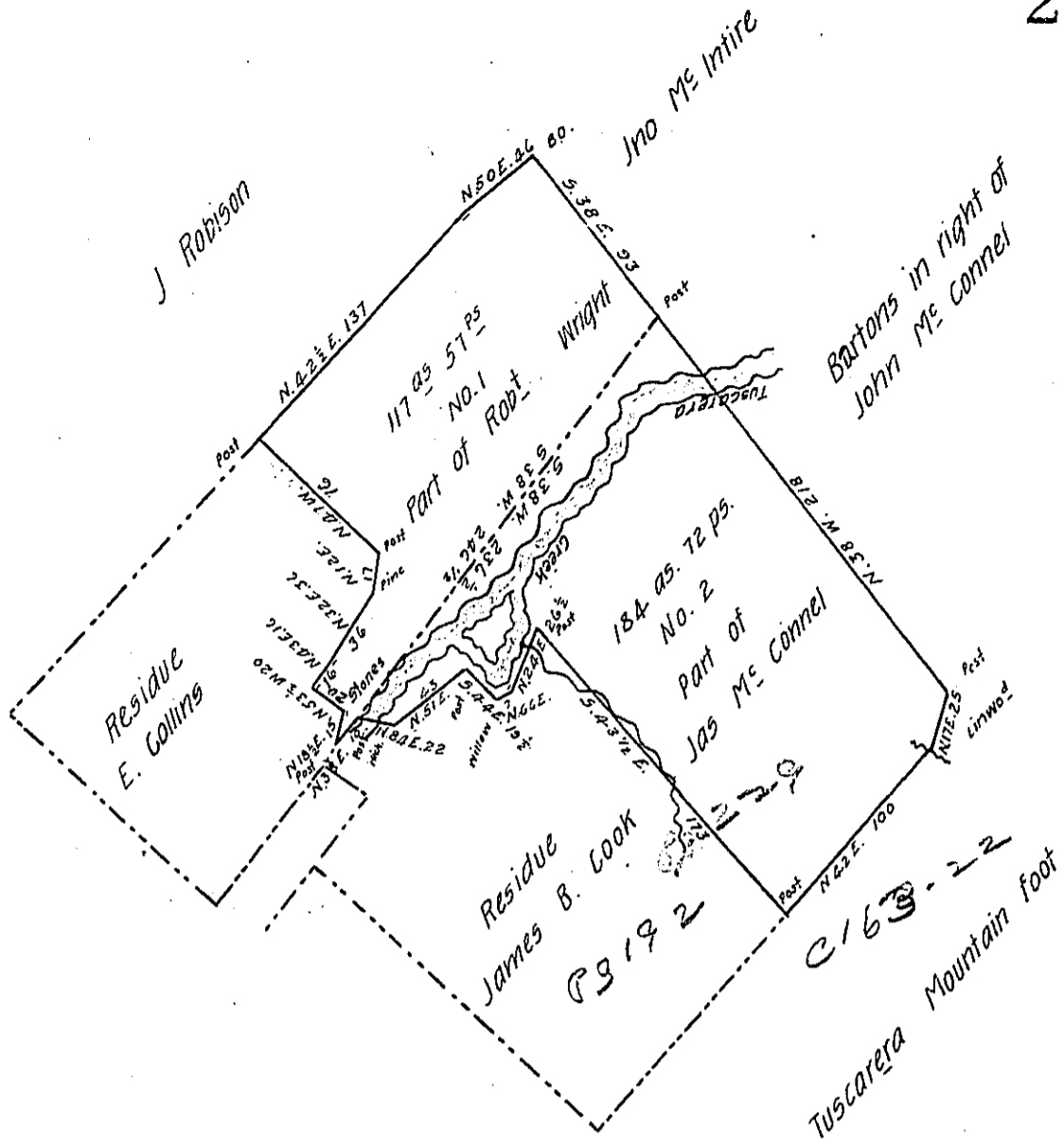


Bearing & Distances
of No. 1.

- VIZ:
- S. 38 W. 246 1/2
 - N. 18 1/2 E. 15
 - N. 53 1/2 W. 20
 - N. 43 E. 16
 - N. 32 E. 36
 - N. 12 E. 17
 - N. 47 W. 76
 - N. 42 1/2 E. 137
 - N. 50 E. 46
 - S. 38 E. 93

Bearings &c. of
NO. 2

- S. 38 W. 236 1/2 N. 38 E. 10
- N. 84 E. 22
- N. 51 E. 43
- S. 44 E. 19 1/2
- N. 66 E. 7
- N. 24 E. 26 1/2
- S. 43 1/2 E. 173
- N. 42 E. 100
- N. 17 E. 25
- N. 38 W. 218



Draught of three hundred and one acres and one hundred and twenty nine perches of Land with six per Cent allowance, situate in Lack Township, Juniata County, formerly Cumberland County. No. 1 Containing one hundred and seventeen acres and fifty seven perches with six per Cent allowance, being part of a larger tract surveyed on a Warrant to Robert Wright dated Nov^r 7th 1785. No. 2 Containing one hundred and eighty four acres and seventy two perches, with six per Cent allowance being part of a larger tract surveyed on a Warrant to James Mc Connel dated March 9th 1787 surveyed the above, April 23^d 1856 for George Mc Connel

per G. W. Jacobs C. S.

To John Rowe Esq^r }
Surveyor Gen^l Pa }

IN TESTIMONY that the above is a copy of the original remaining on file in the Department of Internal Affairs of Pennsylvania, made conformably to an Act of Assembly approved the 16th day of February, 1833, I have hereunto set my Hand and caused the Seal of said Department to be affixed at Harrisburg, this twenty fifth day of September 1906

George W. Jacobs
Secretary of Internal Affairs.